

Contact Us

EDCO

edcodisposal.com

"We'll Take Care of It"

EMAIL

csrlg@edcodisposal.com

TEXT

(619) 202-8365

WEBSITE

edcodisposal.com

ADDRESS

6670 Federal Blvd., Lemon Grove, 91945

PHONE

(619) 287-7555

SCAN THE QR CODE TO
DOWNLOAD THE EDCO APP



GENERAL SERVICE INFORMATION

For information on service, rates, methods of payment and other general information, please contact EDCO to communicate with one of our friendly customer service representatives.

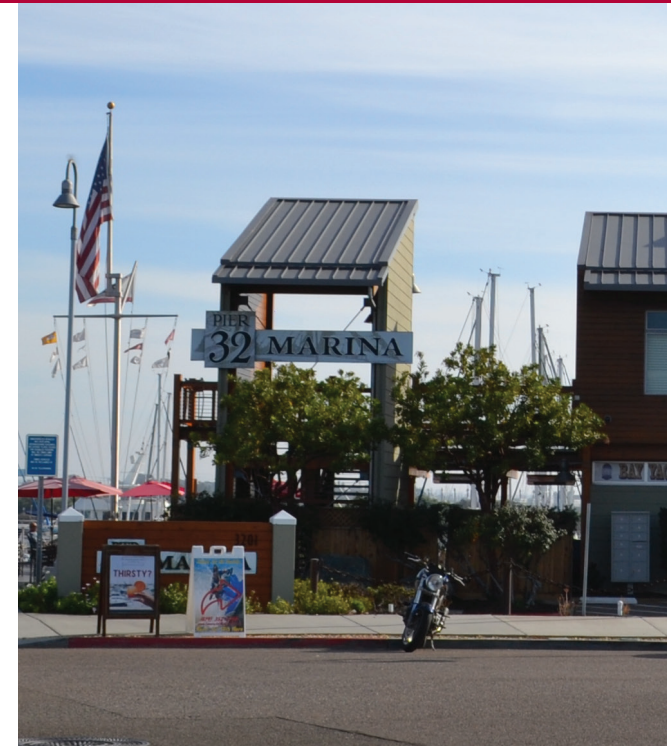
STAY CONNECTED WITH EDCO

Stay connected with EDCO by registering your email address through our website and receive periodic notifications regarding service alerts, upcoming events and environmental news.

Subscribe by going to **edcodisposal.com** and entering your zip code. On our homepage, enter your email address in the designated email box and click on SUBMIT.



City of National City Waste & Recycling Resource Guide



RESIDENTIAL SERVICES

EDCO

edcodisposal.com

"We'll Take Care of It"



edcodisposal.com

"We'll Take Care of It"



WELCOME TO EDCO

EDCO is a *family owned and locally operated* waste collection and recycling company. EDCO specializes in offering integrated, user-friendly waste removal and recycling programs to serve residential homes, multi-family properties, commercial businesses, multi-tenant buildings, industrial centers, construction sites, and community events.



On the Road to Zero Waste!

EDCO has embraced **Zero Waste** as a goal and is committed to helping residents in achieving tangible results. *On the Road to Zero Waste* is not just a slogan, it's a commitment which EDCO pursues daily with our continued diversion efforts. At EDCO, we are not just focused on the easy-to-divert items, we're breaking the diversion paradigm!





edcodisposal.com

"We'll Take Care of It"

Weekly Collection

AUTOMATED CURBSIDE COLLECTION GUIDELINES

Residential service consists of weekly collection of household trash, organics and recyclables from your home and yard.

Our commitment to superior service has offered customers peace of mind on collection day... week in and week out. Our service team provides a level of commitment, integrity, and personal attention that a *family owned and locally operated* company takes pride in offering.



WHAT TO DO ON COLLECTION DAY

- Set out carts at street level with the wheels against the curb, if applicable, and out of the way of traffic.
- Arrows on the lid of carts should point toward the street.
- Keep a minimum of two (2) feet distance between your carts, and three (3) feet from obstructions such as parked cars, mailboxes, trees and telephone poles.
- Please do not overload your carts. Do not overfill the automated carts to prevent the cart lids from properly closing.
- Please be careful not to place carts in areas of traffic, such as bike lanes, to avoid blocking paths of travel.
- To ensure your carts are serviced, please place all carts out by 6:00 a.m. on your service day or the night before.

KEEP A LID ON STORMWATER POLLUTION

In addition to efficient waste collection service, your collection carts will help prevent stormwater pollution in your neighborhood. Your carts' attached lid will keep your trash, recycling and green waste sealed and secure. Stormwater runoff has been determined to be a major cause of water pollution. Unlike the sanitary sewer system where water is treated, runoff that enters a storm drain is not treated and discharges directly into an open body of water like a lake, pond, river, creek, or stream. All of the pollutants that stormwater picks up off the ground as it flows into a storm drain remain in the water and are discharged into the receiving water or structure, adding pollution with every runoff event.



edcodisposal.com

"We'll Take Care of It"

TRASH

EDCO provides each single-family residential customer with a 96-gallon gray automated trash cart for weekly trash collection.

Use your gray trash cart to dispose of non-recyclable household trash.
Residents can request additional gray trash carts for an extra monthly fee.



HOUSEHOLD TRASH INCLUDES, BUT NOT LIMITED TO:

Broken Glass, Ceramics or Mirrors
Diapers
Pet Waste
Chip or Snack Bags
Plastic Grocery Bags
Vacuum Bags
Rubber or Garden Hoses
Wire



KEEP OUT OF THE TRASH CART:

- Recyclables
- Organics
- Household Hazardous Waste (HHW)
- Electronics or Batteries
- Fluorescent Light Bulbs
- Pharmaceuticals, Medical Waste or Needles
- Automobile Parts, including motor oil, oil filters, batteries, and tires

WASTE REDUCTION TIPS:

- Rather than throwing items away in the trash, donate unwanted items to charity, friends or family.
- Reuse glass jars, cups, tubs, aluminum foil, boxes, bags and packaging material.
- Use cloth napkins, tablecloths, and dish towels instead of disposable items.
- Purchase items with less packaging by buying in bulk.
- Bring your own coffee cup, water bottle, reusable bags, and boxes when shopping or out and about, rather than using disposables.
- Subscribe to paperless invoices and notices.
- Opt out of junk mail. Remove your name from mailing lists by visiting OptOutPrescreen.com or by calling toll-free 1-888-5-OPT-OUT (1-888-567-8688).

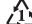



edcodisposal.com

"We'll Take Care of It"

RECYCLING

EDCO provides each single-family residential customer with a 64-gallon blue automated recycling cart for weekly collection. Residents can request additional recycling carts at no extra cost!

Use your blue recycling cart to recycle household containers, mixed paper, newspaper, cardboard and beverage containers marked  - , labeled "CA Redemption Value" or "CA Cash Refund," all mixed together in your recycling cart. Please help prevent contamination by not placing any trash or non-recyclable items in your blue recycling cart. **Please DO NOT use plastic bags.** Recyclable material must be placed loosely inside recycling carts only.



ALL RECYCLABLES GO IN ONE CONTAINER

With our commingled recycling program, there's no need to sort recyclables. One container can take it all!

RECYCLABLES INCLUDE, BUT NOT LIMITED TO:



ALUMINUM:

Aluminum, steel and tin cans, such as food and beverage cans for soda, soup, beer, beans, fruit, and vegetables. Clean aluminum foil, clean aluminum trays, and pie tins.



PAPERBOARD:

Paperboard boxes such as cereal boxes, tissue boxes, refrigerated food boxes, boxes from toiletries, and soda/beer cases.



METAL:

Dry and empty paint and aerosol cans.



CARTON CONTAINERS:

Aseptic cartons, including milk cartons and juice boxes, half-gallon juice cartons, soup/broth cartons, and wine cartons.



SHREDDED PAPER:

Shredded paper (placed in a sealed clear plastic bag for easier handling).



GLASS CONTAINERS:

Glass containers including food jars and beverage bottles.



CARDBOARD:

Cardboard, including boxes used for moving and shipping or any other box or packaging made of corrugated cardboard.



STYROFOAM:

Clean foam cups, meat trays, plates, egg cartons, block packaging (no peanuts), rigid polystyrene, and carry-out containers.



MIXED PAPER:

Mixed paper, including junk mail, catalogs, magazines, newspapers, & paper used for computer printing.



#1 - #7 PLASTICS: All plastic containers, lids, and packaging with a recycling symbol of #1-7 (all containers accepted with caps and lids): water and soda bottles, peanut butter and other food jars, mouthwash bottles, vegetable oil containers, automotive oil containers, ovenable food trays, milk jugs, juice bottles, shampoo and conditioner bottles, detergent and bleach containers, condiment bottles, medicine bottles, bottle caps, butter and yogurt tubs, CD cases, baby bottles, 5-gallon water bottles, CDs, medical storage containers, and rigid plastics such as 5-gallon buckets.



edcodisposal.com

"We'll Take Care of It"

KEEP OUT OF THE RECYCLING CART:

- Soiled Disposable Plates or Cups
- Soiled Paper Towels
- Soiled Tissue
- Plastic Bags (NO plastic grocery bags, newspaper delivery bags or chip/snack bags)
- Ceramics, Drinking glasses, or Mirrors
- Fluorescent Light Bulbs
- Electronics or Batteries
- Household Hazardous Waste (HHW)
- Clothing or Shoes

All food and beverage containers should be EMPTY: no/ minimal food residue and no liquids remaining, and boxes should be broken down and flattened to fit inside the recycling cart.



HELP SAVE NATURAL RESOURCES AND ENERGY

Recycling improves tomorrow's environment today. The production of aluminum, plastic and paper from virgin materials requires significantly more energy and produces more air and water pollution than it does to produce the same item from recycled products.

RECYCLABLE MATERIALS BECOME EVERYDAY PRODUCTS

Millions of items produced are made with recycled materials. Old newspaper becomes new paperboard packaging and newsprint. Shipping containers and cereal boxes are made from recycled corrugated boxes. Today, more paper is recovered for recycling than buried in a landfill.

WATCH WHERE YOUR RECYCLABLES GO

EDCO has created and launched recycling videos available on our website, edcodisposal.com. Our videos are an additional effort to increase awareness by providing a wonderful overview of what happens to commingled recycling as well as Construction, Demolition & Inert (CDI) processing. Watch what happens from the time recyclables are picked up from your home, to when the materials are sorted at our Material Recovery Facility (MRF) and then shipped to domestic and international markets to be made into new recycled products.

ORGANICS

EDCO will provide each single-family residential customer with a 96-gallon green organics cart for weekly collection. Residents can request two additional organics carts at no extra cost! Residents requiring a fourth green organics cart or more may request for a nominal monthly fee.

Use your organics cart to place green waste, food waste and food-soiled paper. Please help prevent contamination by not placing any trash or non-organic items in your green organics cart. **Please DO NOT use any type of plastic bags (including certified compostable or biodegradable bags)** as they contaminate the material! Paper bags are acceptable. Organics must be placed loosely inside green carts only.



ALL ORGANICS GO IN ONE CONTAINER

Organic waste (also referred to as organics), which includes food waste, green waste, landscape and pruning waste, non-hazardous wood waste, and food-soiled paper waste, will be collected all mixed together in your green organics cart. If it grows, it goes!



FOOD SCRAPS

Cooked or raw meat, poultry and seafood (including bones), cheese, dairy products, fruits, vegetables, grains, pasta, egg shells, bread, coffee grounds, tea bags, tea leaves, baked goods, nuts, jelly, candy, snack foods, leftovers, and spoiled food.

How to Collect

- Use a kitchen caddy.
- Empty food scraps directly in your cart (loose or in paper bags) and ensure the lid closes. **Please do not use any kind of plastic bags!**

What to Avoid

Do not include liquids, plastic, glass, metals, or Styrofoam.

YARD WASTE

Grass clippings, small branches, small tree limbs, tree roots, flowers, leaves, plants, and straw.

How to Collect

- Place yard trimmings directly in your green cart (loose or in paper bags) and ensure the lid closes.

What to Avoid

No rocks, dirt, soil, tree stumps, or plastic bags.



FOOD-SOILED PAPER

Paper bags, paper napkins, paper towels, paper plates, paper cups, paper take-out containers and take-out boxes (with no plastic or wax coating, and with metal removed), coffee filters, tissues, food-soiled pizza boxes and food-soiled cardboard boxes.

How to Collect

- Paper can be dry or wet.
- Place food-soiled paper directly in your cart (loose or in paper bags) and ensure the lid closes.



NATURAL FIBERS

Popsicle sticks, sawdust, toothpicks, wooden chopsticks, and untreated wood.

How to Collect

- Place natural fibers directly in your cart (loose or in paper bags) and ensure the lid closes.



WATCH EDCO’S FOOD WASTE RECYCLING VIDEO

EDCO’s Food Waste Recycling video is available on our website, edcodisposal.com, and provides details on ways to collect your food scraps. Learn how organic waste is recycled and its benefits.

COLLECTING YOUR FOOD SCRAPS

There are many different ways to cleanly move food scraps from your kitchen to your green organics container. Here are some of the most popular options:

- **Wrap Your Scraps!** – Many people find wrapping food waste in any type of non-wax paper, such as paper towels, packing paper, newspaper, or paper bags, is an easy way to move food waste from inside your kitchen to your organics cart. This is especially true for large quantities of fruit, meat, etc., and you can even leave the scraps wrapped in the paper and then just drop it into the organics cart. Please do not use any kind of plastic bags!
- **Kitchen Caddies** – A kitchen caddy is a designated container specifically for the internal collection of organics in your home. Any reusable container can be used as a kitchen caddy, but EDCO also has an optional free kitchen caddy for your household use. Please visit our website, edcodisposal.com, and visit the Residential Service’s Organics page to learn more about how to place an order.
- **Containerize It** – Many people have their own containers, such as coffee cans and Tupperware products that they are comfortable using to hold food scraps. Similar to kitchen caddies, once the container is full, it can be taken and emptied into the organics cart.
- **Freeze It** – Some people choose to freeze or refrigerate their food scraps in containers and paper bags and then empty as needed or the night before collection.

Household Hazardous Waste



HOUSEHOLD HAZARDOUS WASTE (HHW)

Household Hazardous Waste (HHW) is unused or leftover portions of products containing toxic chemicals used around the home. Products labeled Caution, Warning, Danger, Poison, Toxic, Flammable or Corrosive are considered hazardous.



HHW INCLUDES, BUT NOT LIMITED TO:

- Batteries
- Paint
- Cleaners & Chemicals
- Pesticides & Fertilizers
- Electronic Waste (Ewaste)
- Motor Oil & Filters
- Fluorescent Bulbs
- Medical Waste
- Mercury Thermometers



HOW TO DISPOSE HHW

National City residents can properly dispose of household toxic waste at the South Bay Regional Household Hazardous Waste drop-off center, located at:
1800 Maxwell Road, Chula Vista- Open Wednesdays and Saturdays, 9 a.m to 1 p.m (except holidays)

Limit: 15 gallons, 125 lbs. of household toxic waste per vehicle. Bring a valid California Driver's License, I.D. or a recent utility bill with a valid address. Call (619) 691-5122 for more information.

HHW REDUCTION TIP:

USE IT UP! If you use all of a product with hazardous ingredients in accordance with label directions, there is no HHW to manage. Containers that once held a hazardous product are not considered HHW if they are completely empty. If you can't use it up, see if someone else can use the remaining product.



PAINT



Paint may not be placed out for curbside collection or disposed of in a bin/container meant for solid waste. FREE paint recycling is available at drop-off sites throughout California. Most of these sites are at paint retailers (paint, hardware, and home improvement stores) that have volunteered to take back paint, and they are available to any resident and business in California. These stores accept paint whenever they are open for business. Visit paintcare.org to find a drop-off site near you and view hours and restrictions.

PHARMACEUTICALS

Do not flush unused, unwanted, and expired medications down the toilet or put them in the drains. Always make sure to keep medication out of reach of children and pets. Unused, unwanted, and expired medications can be disposed of anonymously Monday through Friday during business hours in the disposal kiosk of the National City Police Department, 1200 National City Blvd, National City. When disposing of medication, make sure to remove all labels with personal information and recycle the containers at home. Place unneeded pills into a plastic container or ziplock bag.



SHARPS & NEEDLES



Home-generated sharps waste is hypodermic needles, pen needles, intravenous needles, lancets, and other devices that are used to penetrate the skin for the delivery of medications derived from a household including a multi-family residence or household. Sharps waste should be placed in a State-approved container. Another alternative is to place your sharps waste in a container that does not leak, break, or puncture. It must be taped, sealed, and labeled "SHARPS." When your sharps container is about 3/4 full, seal it securely. Keep your sharps containers out of reach of children and pets. Sharps can be disposed of properly at the EDCO Station Buyback Center in a sharps container located at 8184 Commercial St. La Mesa.

E-WASTE & BATTERIES

Proper disposal of electronic waste (e-waste) is becoming a major environmental concern. Computer monitors, hard drives/CPUs, scanners, keyboards, televisions, VCRs, radios, printers, fax machines, and batteries, all contain significant levels of lead, metals and/or other corrosive materials contained within that should not be put into the regular trash stream. Even when batteries have reached their end-life, they still hold a small charge. If batteries are not discarded properly, they can potentially explode and cause a fire in a collection cart, truck or in a disposal facility when crushed. E-Waste and batteries can be disposed of properly at no cost at the EDCO Station Buyback center, located at 8184 Commercial St, La Mesa.



Collection Information



DETERMINING YOUR COLLECTION DAY

Residential customers are able to look up their collection day with a click of a button! Visit our website, edcodisposal.com, where a collection day map and an interactive collection day lookup feature are located under the Service Schedule tab.

HOLIDAY SCHEDULE

Residential collection service will not be performed on the holidays listed below and as a result, there will be a one-day residential delay in service.

- New Year's Day
- Memorial Day
- Independence Day
- Labor Day
- Thanksgiving Day
- Christmas Day

Holidays which fall on a Saturday or Sunday DO NOT delay waste removal services for the remainder of the week.

Please set out waste and recycling containers for collection on your regularly scheduled service day for all other holidays, including: Martin Luther King Jr. Day, Presidents' Day, Cesar Chavez Day, Juneteenth, and Veterans' Day.



Free Special Events and Services



SHREDDING, E-WASTE AND MULCH EVENT

Once a year, EDCO will hold a FREE document shredding, electronic waste collection and mulch giveaway event. Information will be sent out prior to the event.



BULKY ITEM CLEANUP COUPON

National City residents will receive two free cleanup coupon each year to dispose of large, unwanted items at the EDCO Recovery & Transfer Station located at 3360 Dalbergia St., San Diego, 92113. Open for bulky items on Saturdays from 7 a.m.- 4:30 p.m. and Sundays from 8 a.m.-4:00 p.m. The coupon and detailed information will be printed in the *Environmental Times* newsletter inserted in your billing statement.

BULKY ITEMS

Bulky item pickup is offered by EDCO for large items generated from within your home. Contact EDCO to schedule a pick-up, free of charge on a quarterly basis, limited to three items. We will collect the items at curbside.

BULKY ITEMS INCLUDE BUT NOT LIMITED TO:

Furniture
Carpet
Refrigerators
Freezers
Ranges
Microwaves
Water Heater
Rugs
Book Shelves
Washers & Dryers
Mattresses (please wrap prior to setting out - special mattress disposal bags can be purchased at hardware stores, i.e. Home Depot, Lowe's, etc.)



⊘ ITEMS NOT ACCEPTED FOR BULKY ITEM PICKUP SERVICE:

- Household Hazardous Waste (HHW)
- Electronics
- Fluorescent Light Bulbs
- Pharmaceuticals, Medical Waste or Needles
- Automobile Parts, including motor oil, oil filters, batteries, and tires
- Construction and Demolition Debris
- Concrete, Rocks, Brick or Dirt

Special Services



edcodisposal.com

"We'll Take Care of It"

TEMPORARY DUMPSTER

Are you planning a home improvement or yard clean up project? Get a bin to throw it in! Temporary dumpsters are used by customers who are performing a one-time clean up. Call EDCO to order a temporary-use dumpster for on-site debris collection. A 3 cubic yard dumpster will hold approximately the same amount of debris as 20 standard trash cans. We will deliver the container directly to your home and pick it up when you are finished. For more information or a free estimate, call our office or fill out our Contact Us form by visiting edcodisposal.com



ROLL-OFF BOXES

Roll-off boxes are used by customers who generate large volumes of refuse demolition material or construction debris. Different size containers will be provided depending on the weight of material to be disposed of. For more information regarding the different size options available or for a free estimate, call our office or fill out our Contact Us form by visiting edcodisposal.com

